

ADVANCED ALGORITHM DEVELOPMENT FOR MODELLING & EVALUATION

WHY IT MATTERS

Poorly designed AI models can lead to unreliable decisions and reduced trust. Advanced algorithm development improves accuracy, scalability, and transparency. This enables confident, data-driven decisions aligned with business goals.

WHAT WE OFFER

Statswork delivers end-to-end Advanced Algorithm Development services tailored to complex business challenges, enabling intelligent automation and high-performance decision systems.



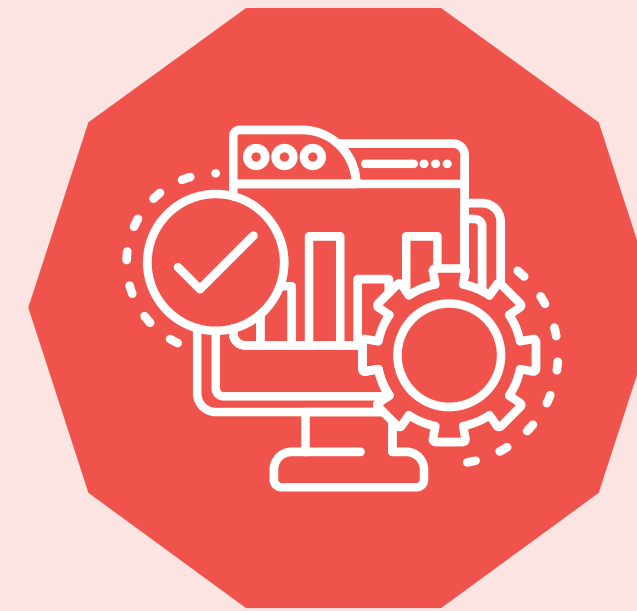
Custom Algorithm Development



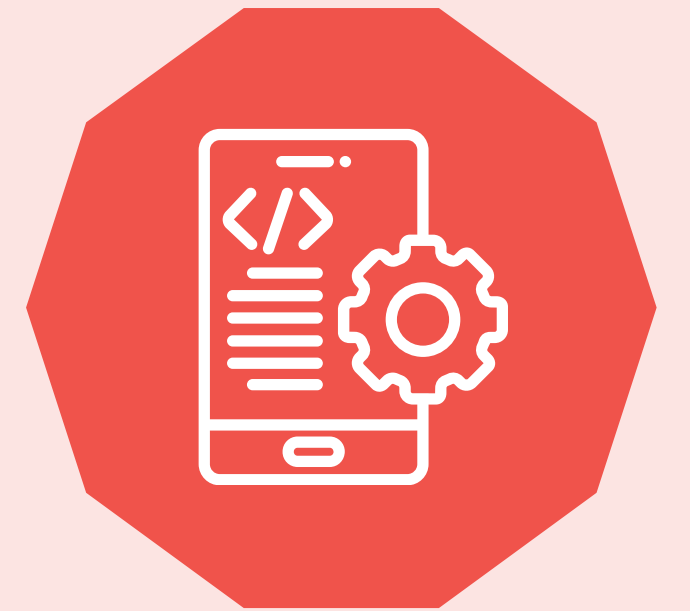
Model Evaluation & Validation



Feature Engineering & Data Preparation



Model Tuning & Optimization



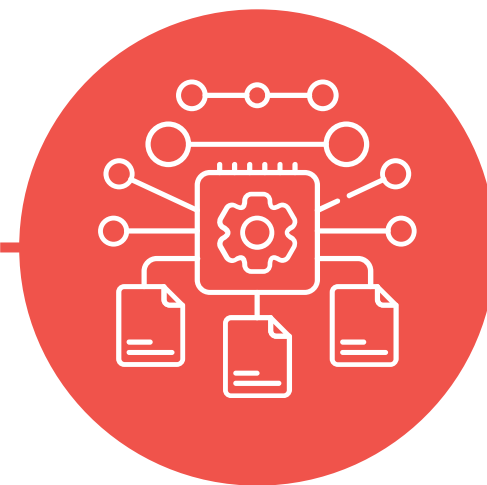
Real-Time Algorithm Development & Deployment

STATSWORK'S PROVEN PROCESS



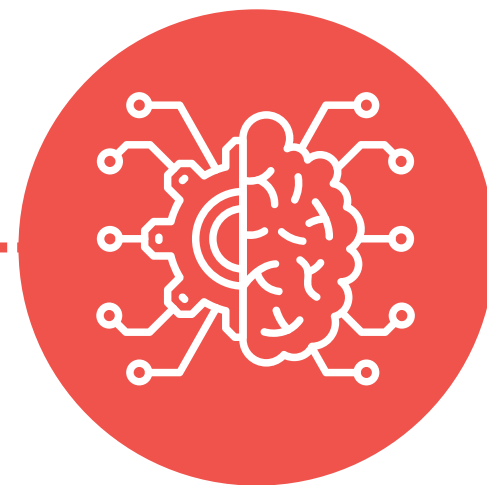
Requirement Definition & Use Case Mapping

Identifying business objectives, defining use cases, and mapping end-to-end process flows to align algorithms with real-world needs.



Data Preparation & Feature Engineering

Transforming raw data into meaningful inputs through cleaning, structuring, and advanced feature engineering techniques.



Algorithm Design & Development

Building customized AI/ML models for predictive analytics, classification, and optimization using advanced methodologies.



Model Evaluation & Validation

Applying rigorous testing, validation frameworks, and performance metrics to ensure reliability, accuracy, and robustness.



Optimization & Deployment

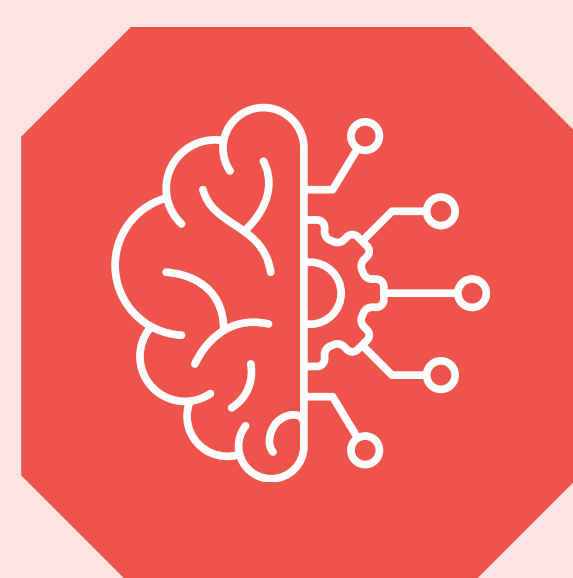
Fine-tuning models for performance, scalability, and deploying them with continuous monitoring and maintenance support.

WHY CHOOSE STATSWORK?



Custom-Built, Business-Aligned Models

Algorithms tailored specifically to your industry, objectives, and data environment



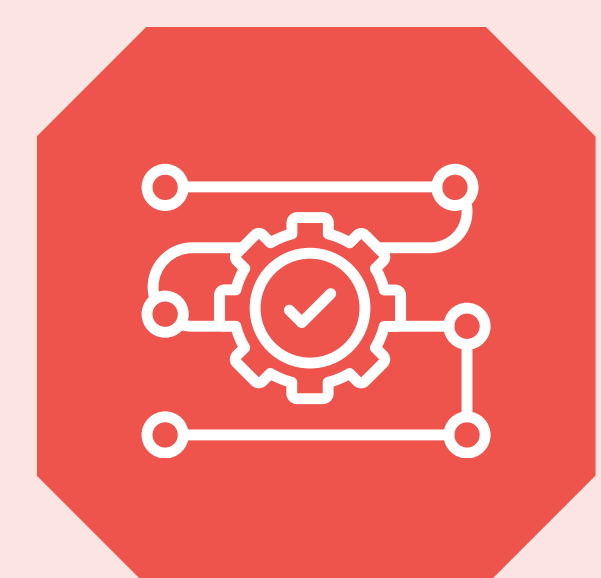
Explainable & Transparent AI

Delivering interpretable models that build stakeholder trust and ensure compliance.



Scalable & High-Performance Solutions

Designed to handle complex, high-dimensional data and large-scale enterprise needs.



End-to-End Support

From development and validation to deployment, monitoring, and optimization.

CONTACT